



This online resource is being provided to teachers free of charge by the Professional Development Institute. Visit us online at <https://www.webteaching.com>

Creating Your Own YouTube Channel

If you wish to post videos on YouTube, you should create your own classroom channel. It's easy and it's free. Follow the instructions below to create your YouTube channel.

1. Make sure you are logged in to your Google account and then click the **camera** icon at the upper right-hand side and then select **Upload video**. Then, click **Get Started**.



2. This is your opportunity to create your own YouTube channel. The name associated with your Google account is already populated as the name of your YouTube channel. You can change this to something related to your classroom if you wish. After you enter the name, click **Create**.

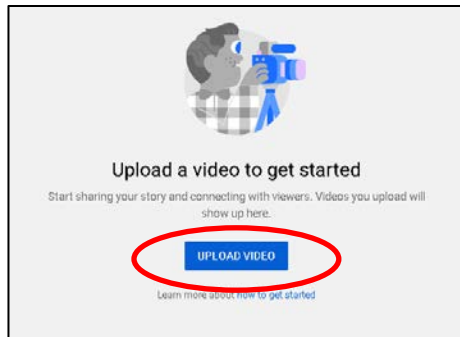
Create your channel name

You can use your brand's name or another name. A good channel name represents you and your content. You can change your channel name at any time.

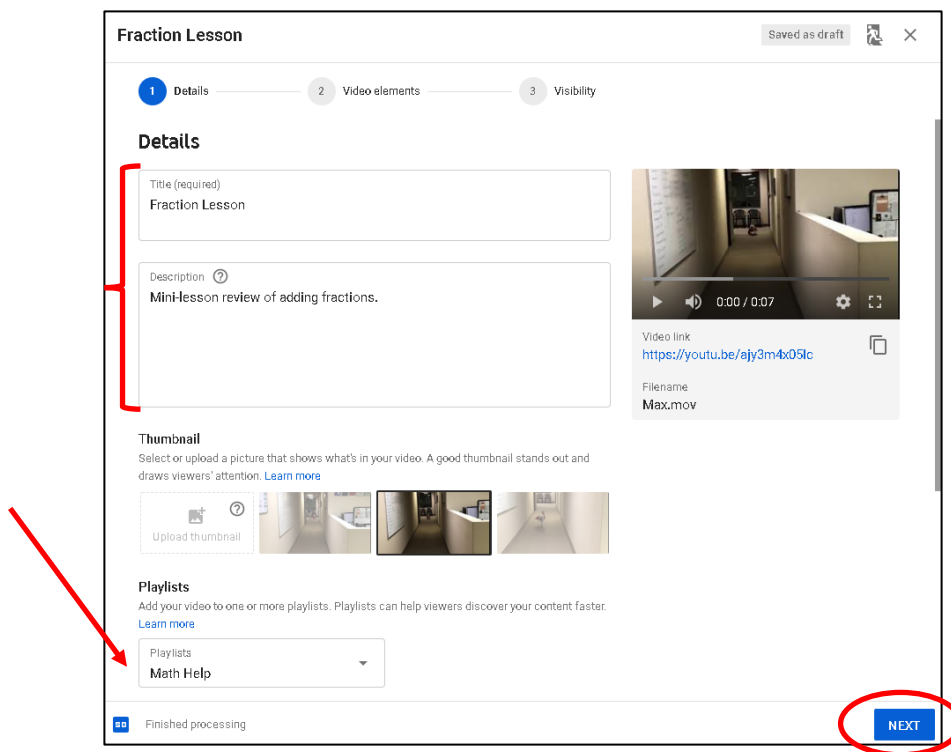
Channel name
MrsRyanClassVideos

I understand that I am creating a new Google Account with its own settings, including YouTube search and watch history. [Learn more](#)

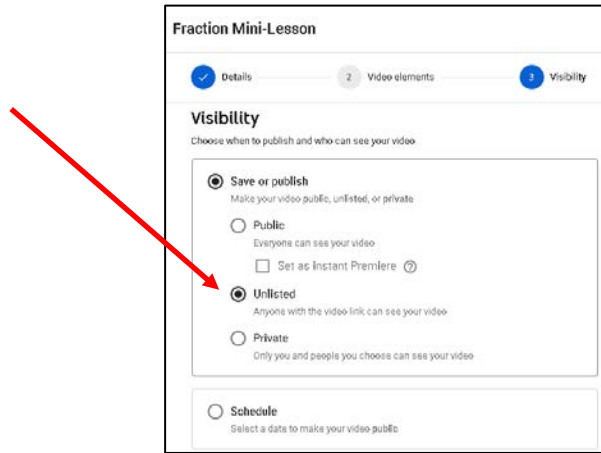
3. You can add a photo if you wish, as well as links to your classroom website or classroom social media pages. When you are finished, click **Save and Continue**. Your very own YouTube channel has been created!
4. You should now see the Upload page. Click on **Upload video** to locate and upload files from your computer. Keep in mind that the default settings for videos sets the upload limit to no longer than 15 minutes or 2 GB in size. However, YouTube now has an option for uploading videos longer than 15 minutes. [Click here](#) for more information. YouTube supports nearly every file format type, but to see a complete list, [click here](#).



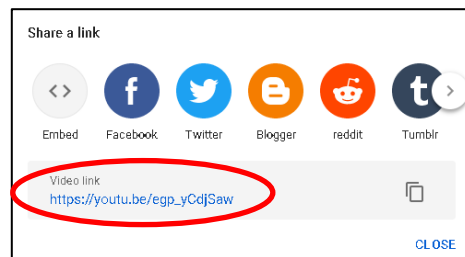
5. Click **Select File** and then locate the file you wish to add to your YouTube channel. Now add a **Title** and **Description** of the video. If you plan to add videos to your channel on a regular basis, you may wish to create playlists to help organize them. In the example below, the fraction mini-lesson video is being added to the **Math Help** playlist. Be sure to scroll all the way down and click the box next to **Yes, it's made for kids**. When you are finished, click **Next**.



6. You will not have the option to add video elements if you checked that the video is for kids. However, you do have options for the visibility of your video. Unlisted protects privacy but allows you to easily share the video via e-mail or embed a link at your class website. When you are finished, click **Save**.



7. Once the video is published, YouTube automatically provides the link as well as easy click options to embed the video or upload it to a variety of social media options.



This excerpt is from the PDI online course Educational Technology 101 (K-12). This course is worth 3½ units of graduate-level credit from UCSD, Extension. For more information on this online course, [click here](#).